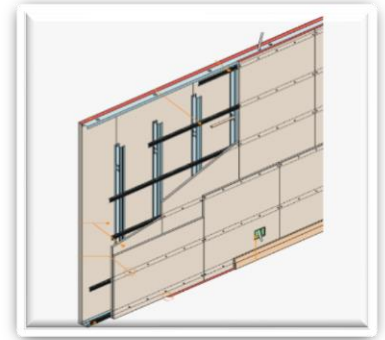


METAL HOUSE SPECIFICATIONS

1. OUTSIDE WALL FIREPROOF WITH CERTIFICATION FOR 1.00HR.

- 1 hand plaster on all the surface
- 2 hands plaster with fiberglass tape on all the joints
- Fireproof gypsum board 12,5mm (GKF)
- Rockwool inside the wall, 100mm thickness and 50kg/m³ density
- OSB 11mm
- Air circulation mebrane on the OSB
- Polystyrene 5εκ. ή Multipor 5 εκ. (www.multipor.co)
- 1 hand glue with fibreglass tape on all joints
- 2 hands thermal plaster / 3rd hand net on the outside (Super Plus)
- 3 hands outdoor paint with roll



Options for outside walls: cement board (Aqoua Panel)12 mm, bricks Y-tong 10 cm, small bricks Australian type. For these items there is extra charge.

2. INTERNAL PARTITION WALLS.

- 1 hand plaster on all the surface
- 2 hands plaster with fiberglass tape on all the joints
- Gypsum board 12,5mm including 75mm steel frame
- Rockwool inside the wall, 50mm thickness and 50kg/m³ density
- Gypsum board 12,5mm (GKB)
- 2 hands plaster with Fiberglass tape on all joints
- 1 hand plaster on all the surface
- 3 hands paint on all the surface with roll



3. CEILING

- 3 hands paint on all the surface with roll
- 1 hand plaster on all the surface
- 2 hands plaster with fiberglass tape on all the joints
- Gypsum board 12,5mm including 75mm steel frame
- Rockwool inside the ceiling, 50mm thickness and 50kg/m³ density

4. ELECTRICAL INSTALLATION

The installation will be executed based on British standards and approved from the EAC. We shall install sockets, telephone sockets, tv sockets, distribution boards, air conditioner sockets etc. according to the electrical study.

5. PLUMBING INSTALLATIONS

- Network of drainage, water sewage, plumbing PIPE IN PIPE. Water tank, solar hot water panels and pressure system. All installations will be positioned on the ground floor.



6. FLOORS

- Internal spaces ceramic tiles worth from €20 - €35 per sq. m according to the size of the house.
- For wall tiles in the bathroom and kitchen areas ceramic tiles €20 -€35 per sq.m according to the size of the house.
- For outdoor areas ceramic tiles worth €20 per sq.m are provided.

7. WOODWORK

All woodwork installations are Italian and will be executed according to the final Architectural plans. It includes the following:

1. Wardrobes in the bedrooms come with Laminated doors in your preferred color (restrictions apply)
2. Kitchen woodwork come with Laminated doors in your preferred color. Accessories are also included (restrictions apply)
3. Bathroom cupboards with Laminate material (restrictions apply)

Supplier: Biennale Cucine Italiane and Cucina & Cucina



8. SANITARY WARE

- Sanitary ware are supplied according to final plans.
Suppliers: DC DEMETRIADES, MAOURIS OIKOSET, MARCOU BROS, SOFOKLIS KYPRIANOU

9. ALUMINIUM DOORS & WINDOWS

All the aluminum doors and windows are supplied by Muskita, Alumil or Rabel. All the aluminum doors and windows are thermal.

10. CENTRAL HEATING

Full provision for gas or diesel central heating including hot water pipes, cold water, heating wall element provision and electricity where required etc.

THE ITEMS BELOW ARE NOT INCLUDED IN THE PRICE:

- Fireplace
- BBQ
- Window shutters
- Swimming pool
- Lights
- Outside wall coverings apart from 3rd hand plaster.
- Supply and installation of air conditioners
- Garden and land design
- Earthworks